



# AURIVERDE MINING

April, 2025

Auriverde Mining:  
**Responsible growth,  
sustainable future**



# AURIVERDE MINING

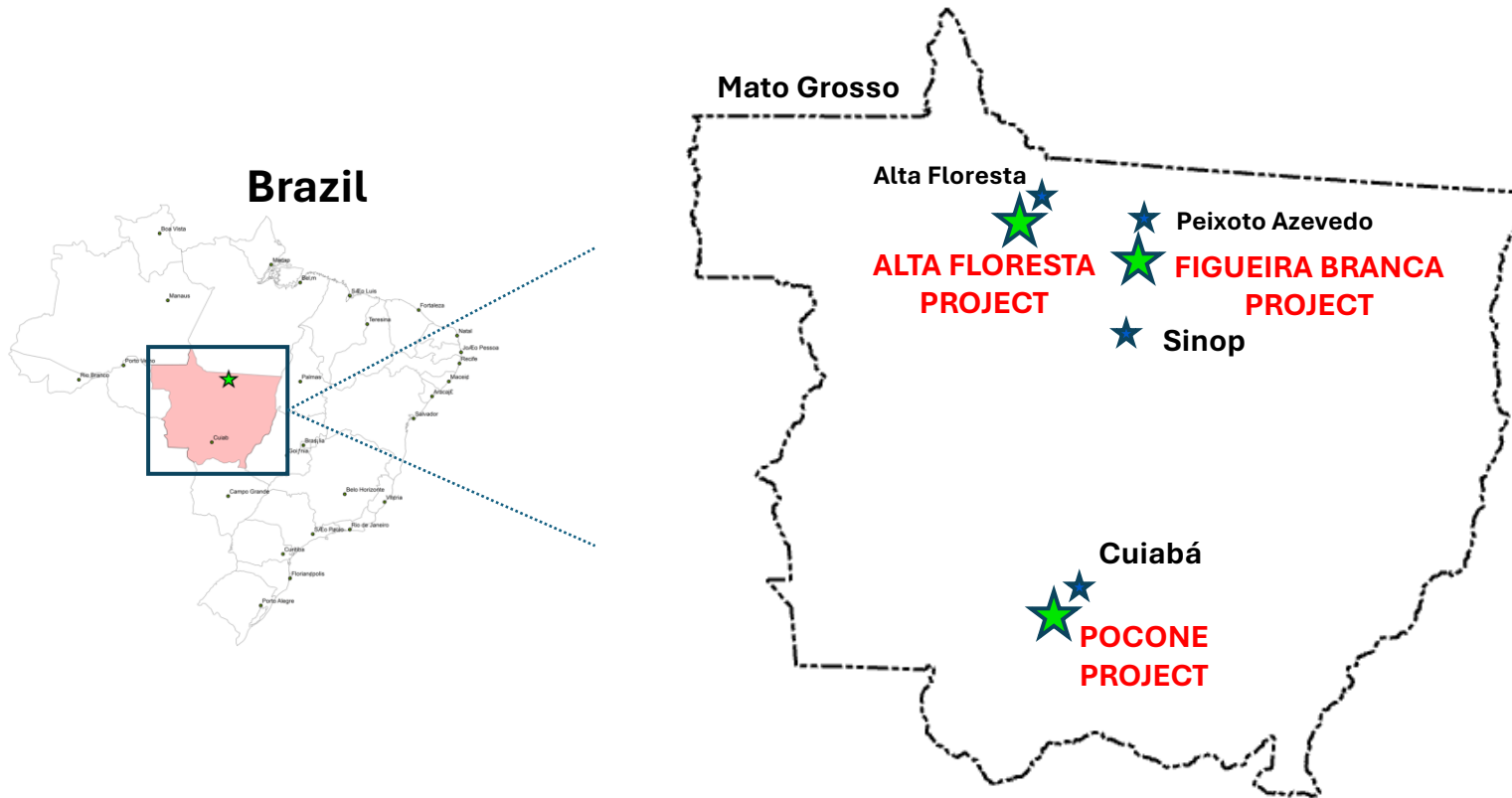
## Operating in a Mining Friendly Jurisdiction (Mato Grosso State, Brazil)

- Privately held Brazilian company established in 2025
- Focused on high-potential projects with near-term mining opportunities, including areas with existing mining permits (PLG) and historically active garimpos
- Current portfolio includes the Figueira Branca (flagship), Poconé, and Alta Floresta projects
- 2,963 hectares covered by Mining Permits (PLG)
- The Poconé Project includes a processing plant with a capacity of 1,500 tonnes per day (tpd) and supporting infrastructure
- The Figueira Branca Project is advancing robustly, with an ongoing mineral resource delineation program, detailed engineering studies, pre-stripping of open pits, and updates to the operating license



# AURIVERDE MINING

Operating in a Mining-Friendly Jurisdiction (Mato Grosso State, Brazil)



 Mato Grosso State

 Project

 Main Cities

Auriverde Mining:  
**Responsible growth,  
sustainable future**



# FIGUEIRA BRANCA

The Flagship Asset

Auriverde Mining:  
**Responsible growth,  
sustainable future**



# AURIVERDE MINING

## 2025 EXPLORATION PROGRAM

- A total of **20,000 meters of diamond drilling** is planned, including 10,000 meters at the Figueira Branca, 5,000 meters at the Poconé, and 5,000 meters at the Alta Floresta Projects.
- A total of **18,500 meters of trenching** is planned, comprising 4,500 meters at Figueira Branca, 5,500 meters at Poconé, and 8,500 meters at Alta Floresta Projects.
- A total of **2,350 soil samples** are scheduled for collection, including 1,800 samples at Alta Floresta and 550 samples at the Poconé Projectz



# FIGUEIRA BRANCA PROJECT

## INTRODUCTION

- One of the most historically significant garimpos in the Alta Floresta Province
- Gold production commenced in the early 1980s
- Located in Nova Santa Helena, State of Mato Grosso, Brazil
- Situated 40 km from Terra Nova do Norte, 154 km from Sinop (nearest airport), and 630 km from Cuiabá (state capital)
- Comprises 32 mining permits (PLG), covering a total of 1,479 hectares
- Currently includes 12 exploration targets, with substantial potential for the identification and development of additional targets



# FIGUEIRA BRANCA PROJECT

## KEY MILESTONES

1. Exploration program underway to delineate an initial 100,000 ounces of gold resources
2. Advancing detailed engineering for a gravity–CIL (Carbon-in-Leach) processing circuit
3. Updating the operating license to reflect the new plant design
4. Pre-stripping activities initiated to prepare open pits for mining
5. Construction scheduled to commence in the second half of 2025 (Ball mill and gravity circuit equipment already acquired)

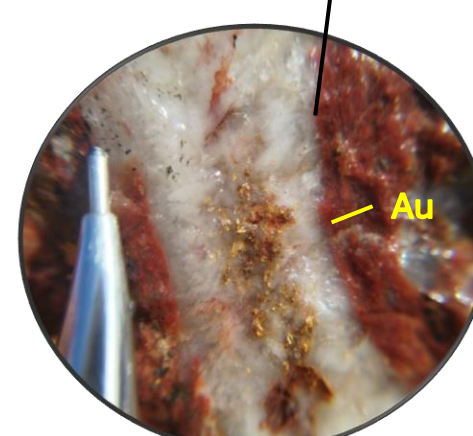
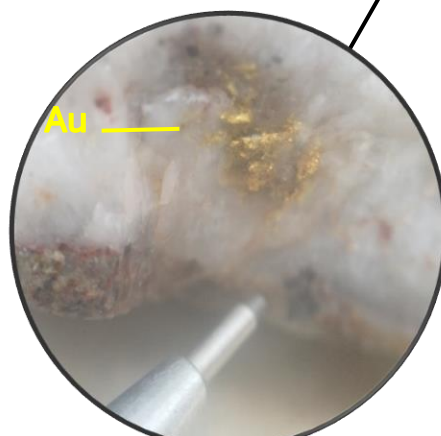
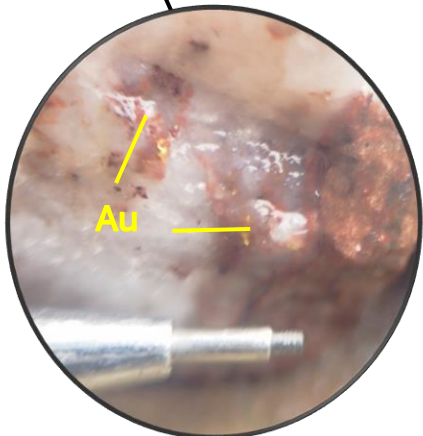
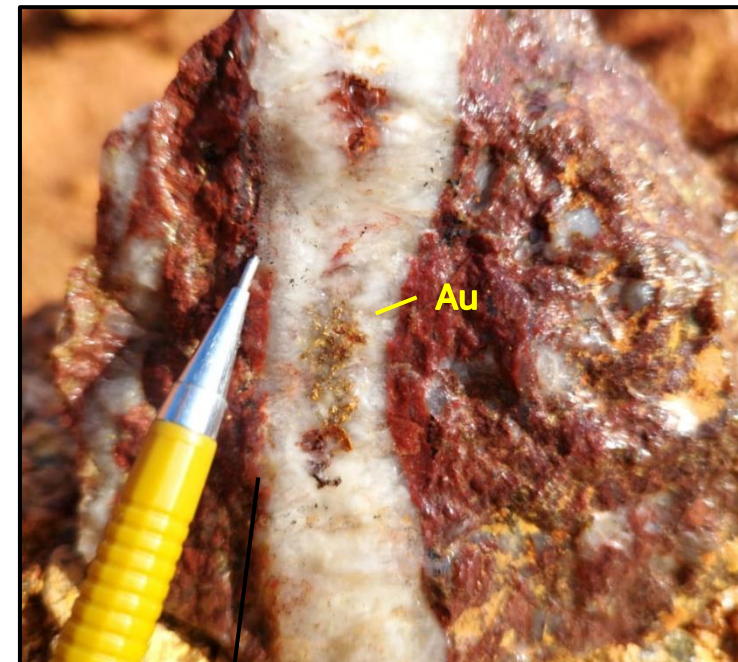
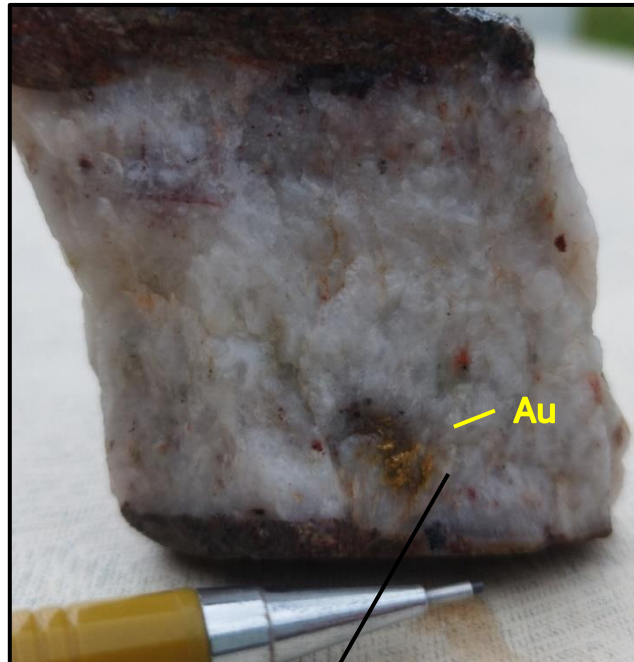
# FIGUEIRA BRANCA PROJECT

## LOCAL GEOLOGY – MINERALIZATION



# FIGUEIRA BRANCA PROJECT

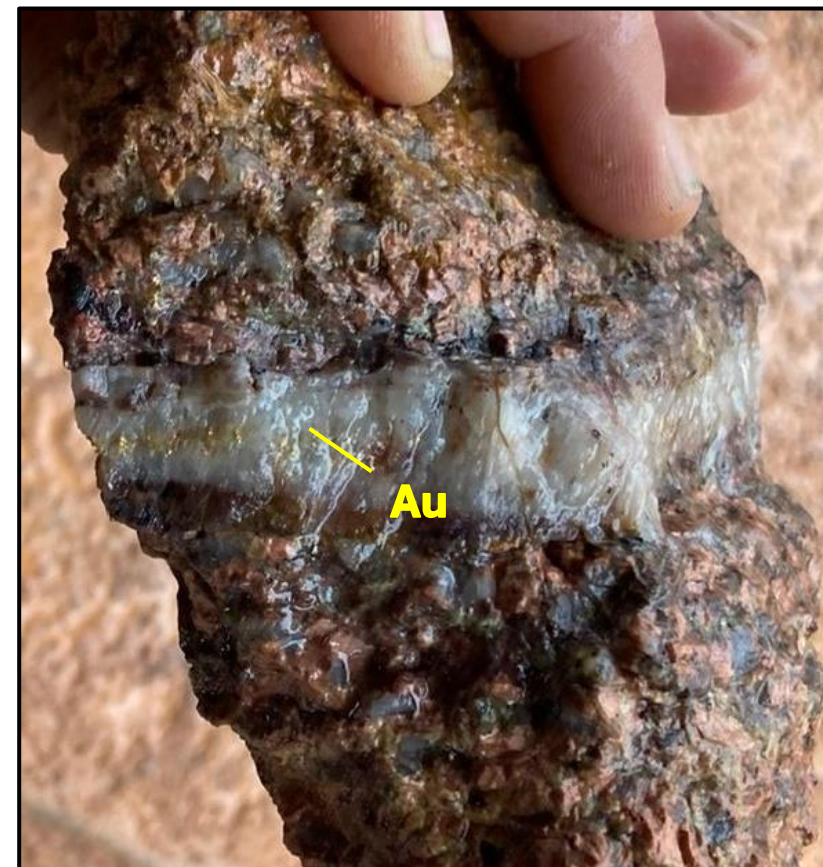
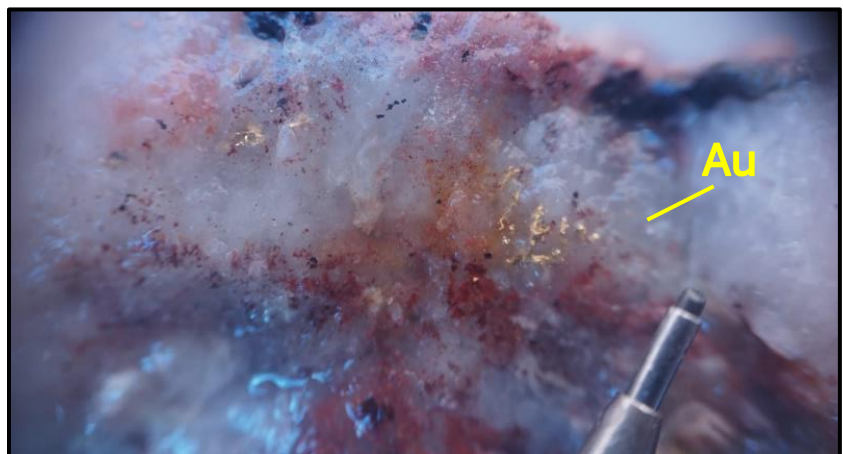
## LOCAL GEOLOGY – MINERALIZATION



# FIGUEIRA BRANCA PROJECT

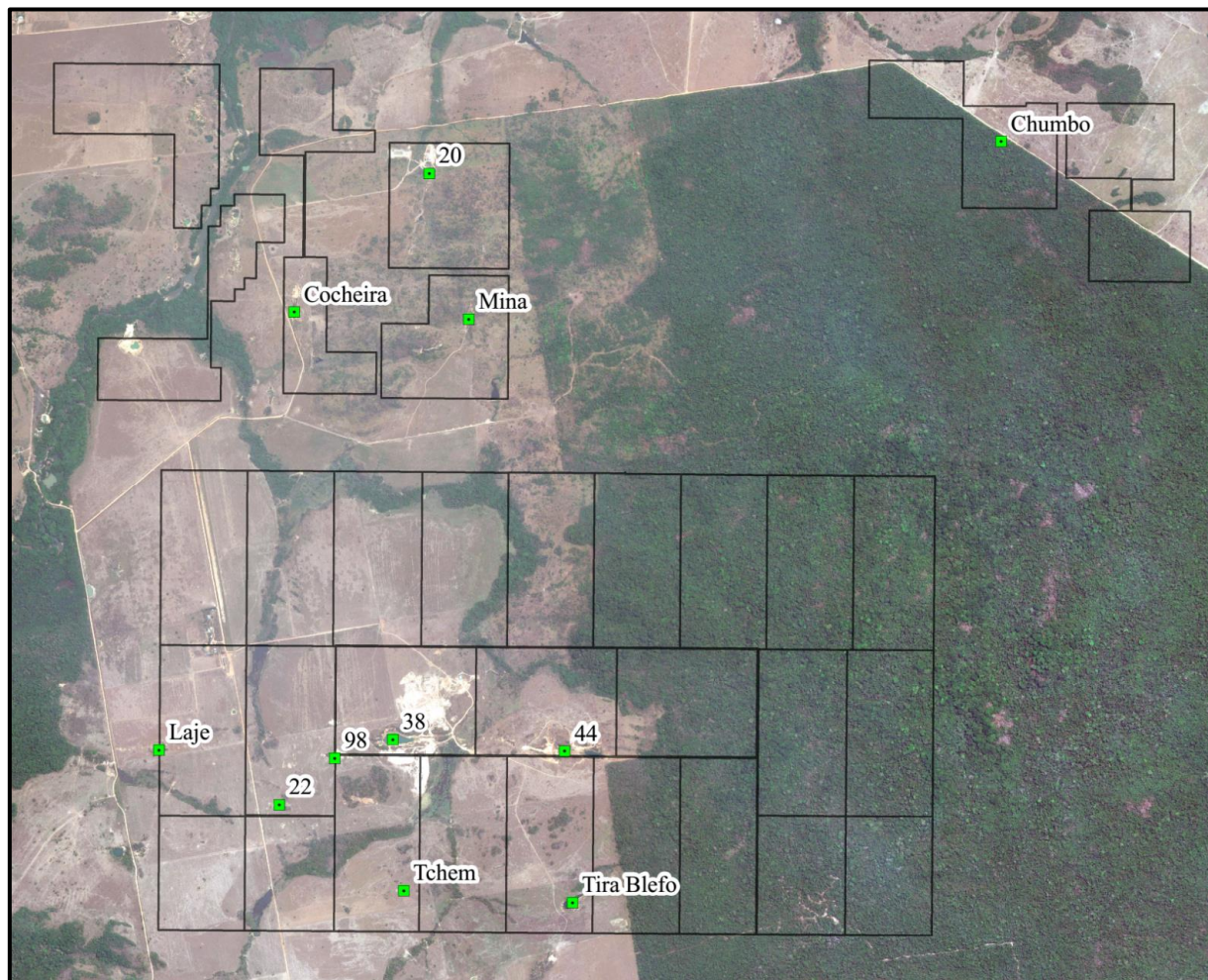
## LOCAL GEOLOGY

- The concentration of gold in the central portions of the veins indicates a direct correlation between mineralization and the structural formation of the host veins.



# FIGUEIRA BRANCA PROJECT

## TARGETS AND POTENTIAL FOR NEW DISCOVERIES



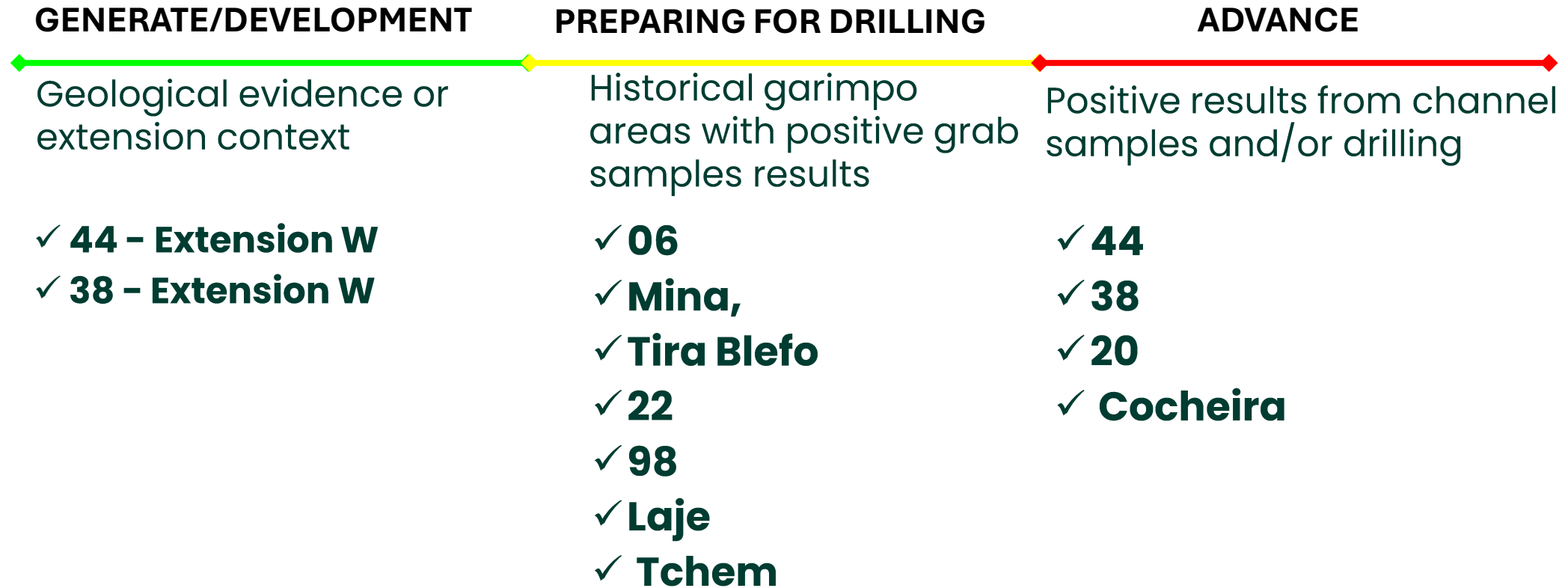
52 mining permits (PLG), covering 1,479 hectares, with 12 identified targets

- Current targets were previously exploited by garimpos, focusing on saprolite zones through shallow open pits and limited hard rock work through 2 shallow shafts
- **Advanced targets** with positive results from channel sampling and/or drilling include: 44, 38, 20, and Cocheira
- **Targets prepared for drilling** are historical garimpo areas with positive grab sample results, including: 06, Mina, Tira Blefo, 22, 98, Laje, and Tchem
- **Generation and development of new targets** based on geological evidence, including potential extensions to the west of targets 44 and 38, as well as soil gold anomalies



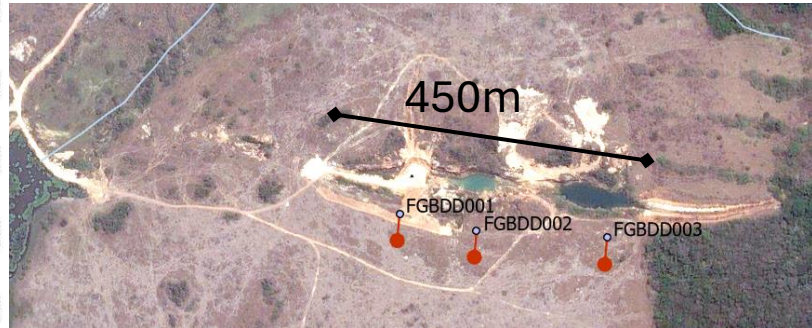
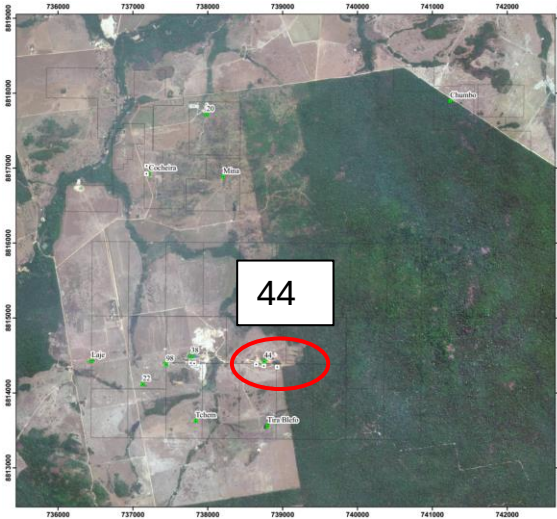
# FIGUEIRA BRANCA PROJECT

## EXPLORATION PIPELINE TARGETS



# FIGUEIRA BRANCA PROJECT

## ADVANCE – 44 TARGET



- 450m along N275 direction
- Includes two shallow open pits with 100m of strike each and one shaft with 30m depth
- Mineralized zone with **1 - 5m** of wide characterized by quartz vein with Pyrite (+/- Chalcopyrite) hosted in mafic dike and granite with east-west direction
- Historical grab samples results returned up to **38.95 g/t Au**
- Drill hole **FGBDD003** intersected **2.41m@6.19g/t Au and 0.3% Cu**, from 50 m below the bottom of the pit
- Target potential is totally open

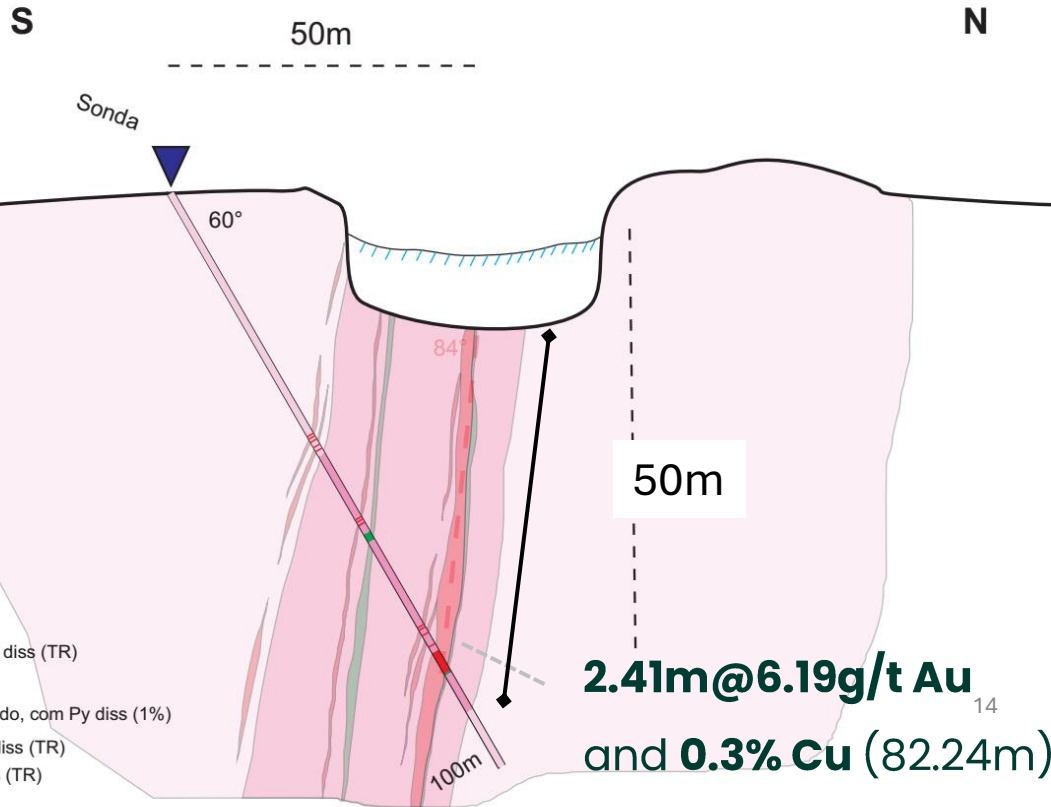


# FIGUEIRA BRANCA PROJECT

## ADVANCE – 44 TARGET

**FGBDD-003**

Alvo: 44  
Prof: 100m  
Az: 5  
Dip: 60



- Granito médio maciço com Py diss (TR)
- Dique máfico, muito fino
- Granito potassificado, silicificado, com Py diss (1%)
- Veio de Quartzo com Py fina diss (TR)
- Máfica silicificada com Py diss (TR)

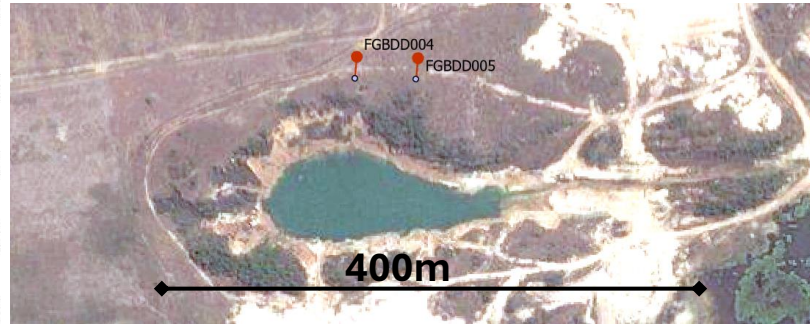
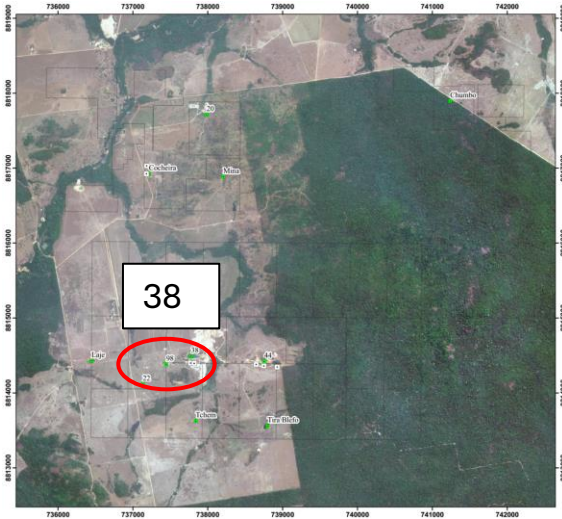
**The intersection is True width**



Auriverde Mining:  
**Responsible growth,  
sustainable future**

# FIGUEIRA BRANCA PROJECT

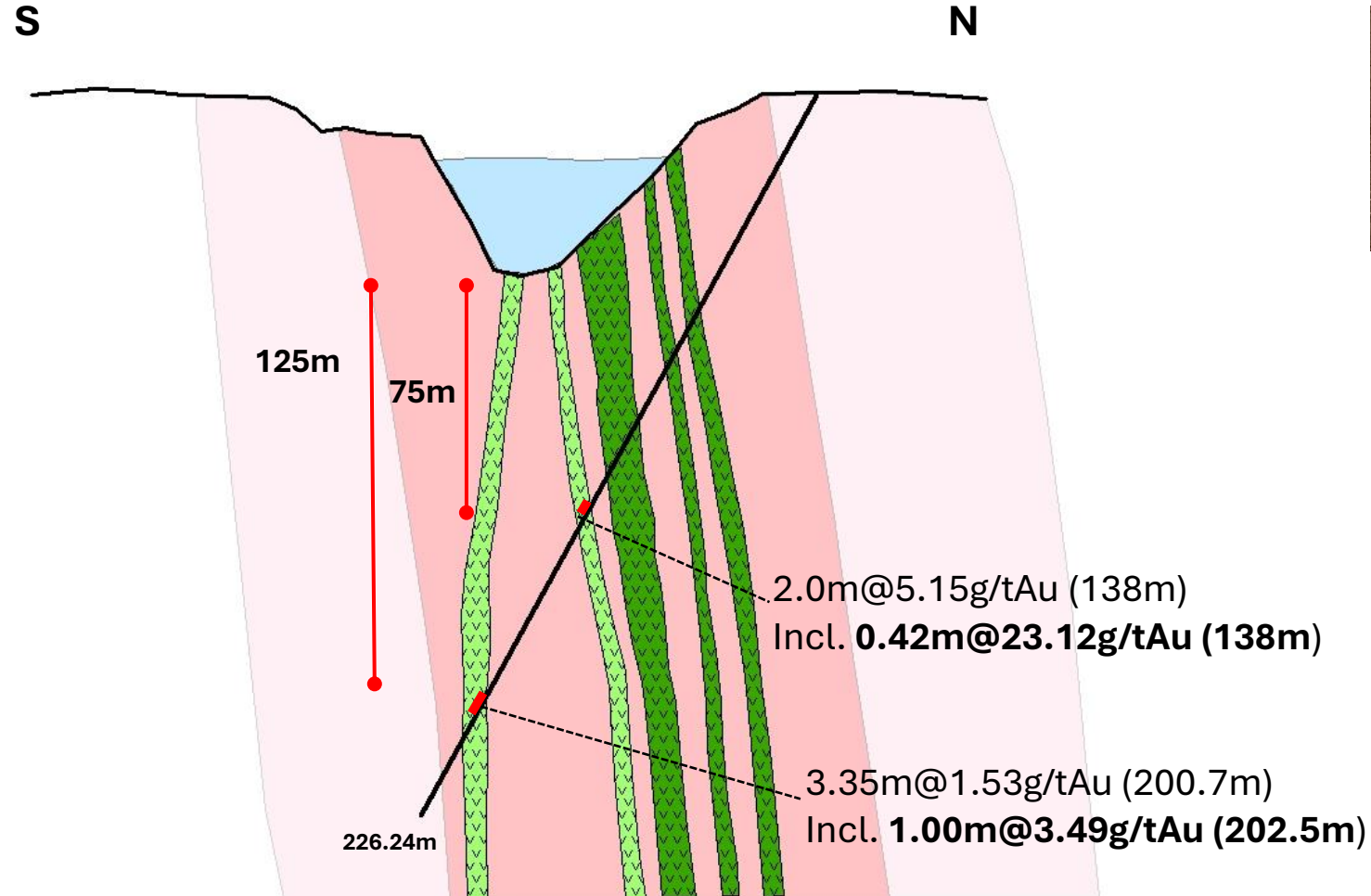
## ADVANCE – 38 TARGET



- 400m along N270 direction
- Include one open pit with 200m of strike
- Mineralized zone with 0.3 m – 5 m of wide characterized by quartz vein and/or disseminated Pyrite in mafic dike hosted granite with east-west direction
- Historical grab samples results returned up to **138 g/t Au**
- Drill hole **FGBDD004** intersected **4.0m@5.15 g/t Au** and **6.7m@1.53 g/t Au**, including **2.0m@3.49g/t Au**, from **75 m** and **125m** below the bottom of the pit respectively
- The target potential is totally open

# FIGUEIRA BRANCA PROJECT

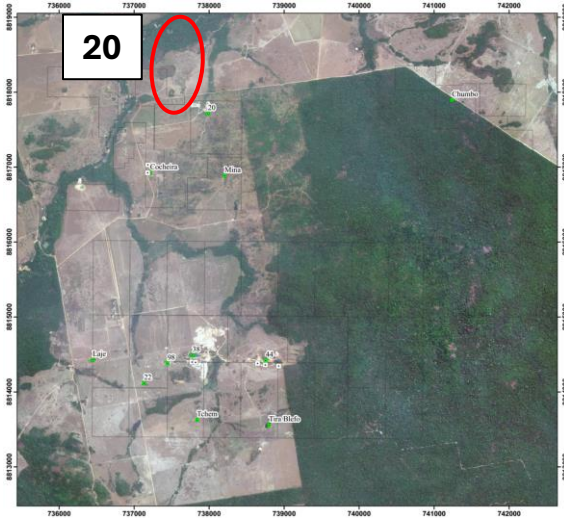
## ADVANCE – 38 TARGET



Auriverde Mining:  
**Responsible growth,  
sustainable future**

# FIGUEIRA BRANCA PROJECT

## ADVANCE – 20 TARGET

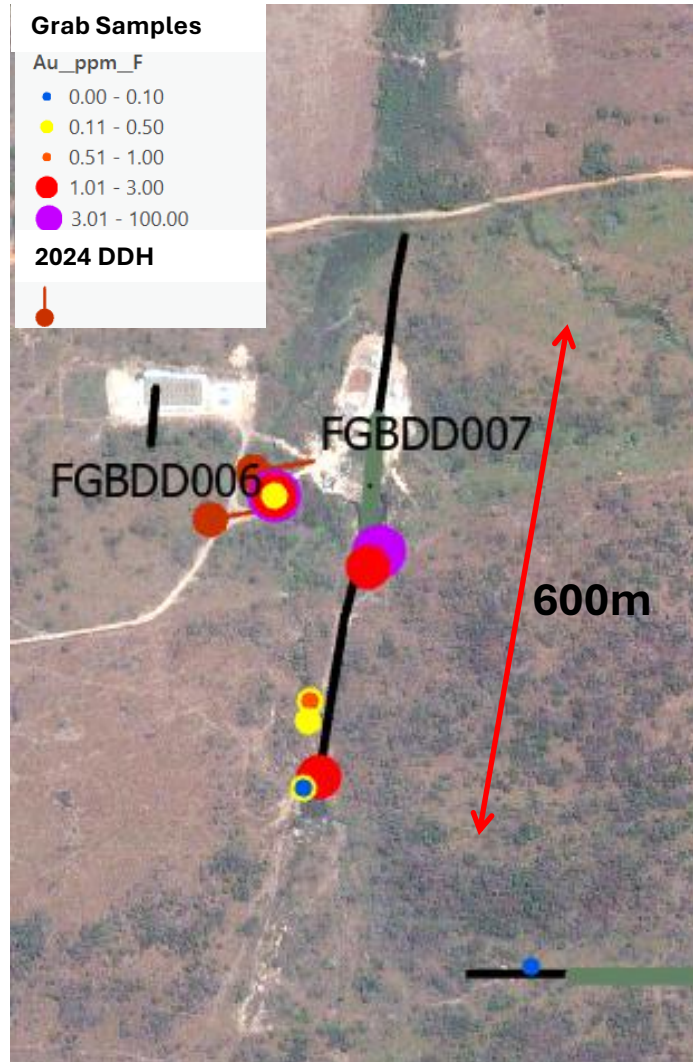


### Grab Samples

Au\_ppm\_F

- 0.00 - 0.10
- 0.11 - 0.50
- 0.51 - 1.00
- 1.01 - 3.00
- 3.01 - 100.00

2024 DDH

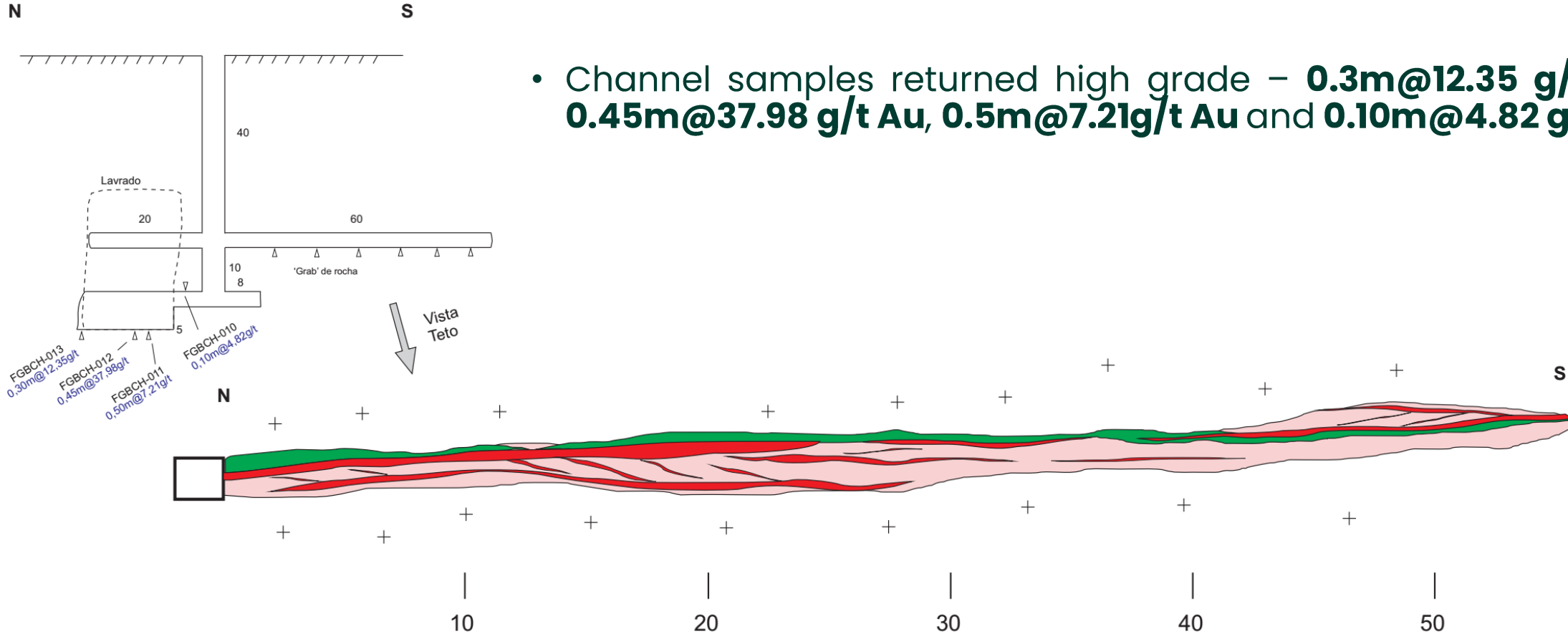


- 600m along strike N010 with shaft and positive grab samples
- Mineralized zone with **0.1 - 1.0 m** of wide characterized by quartz vein with Pyrite in mafic dike hosted granite with east-west direction
- Historical grab samples results returned up to **53.85 g/t Au**
- Channel samples returned higher grade – **0.3m@12.35 g/t Au, 0.45m@37.98 g/t Au, 0.5m@7.21g/t Au and 0.10m@4.82 g/t Au**
- Two historical holes were executed and recently sent to Lab. The results are pending
- The potential is totally open



# FIGUEIRA BRANCA PROJECT

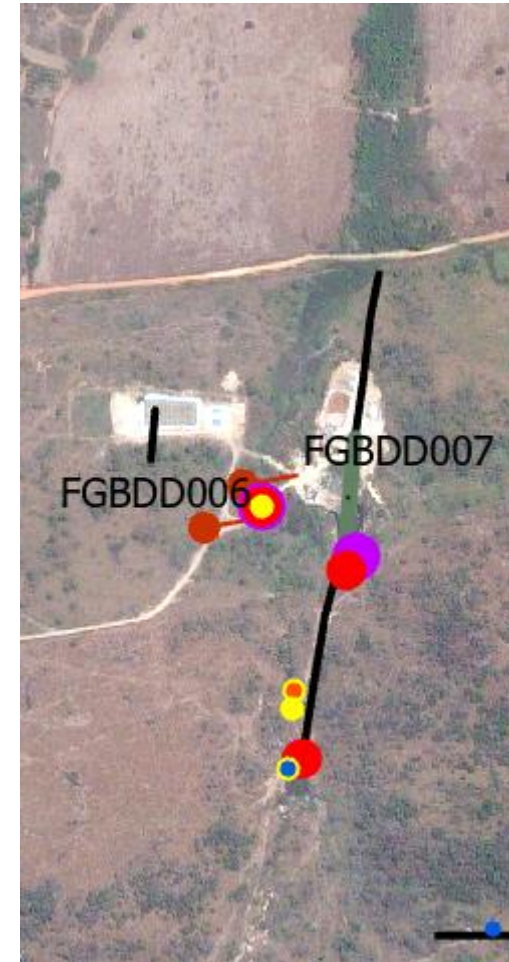
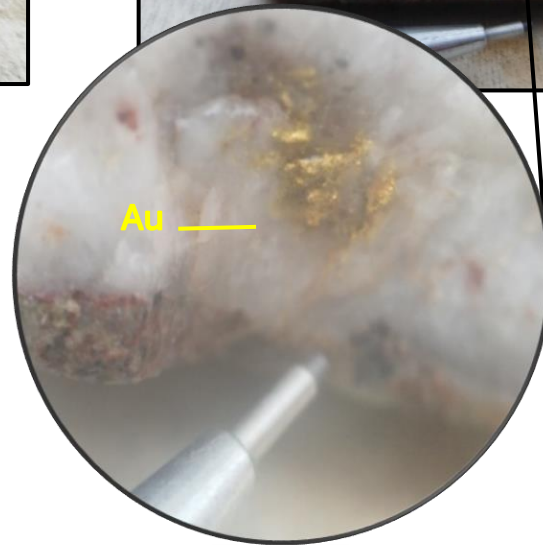
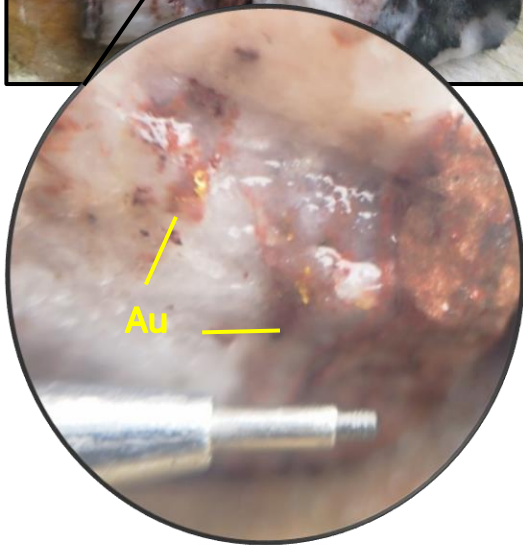
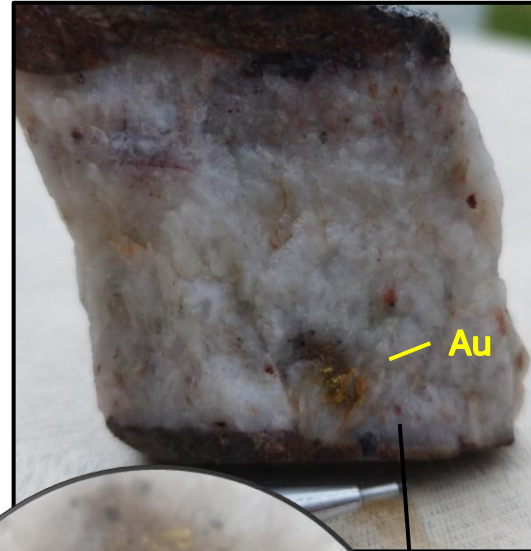
## ADVANCE – 20 TARGET



# FIGUEIRA BRANCA PROJECT

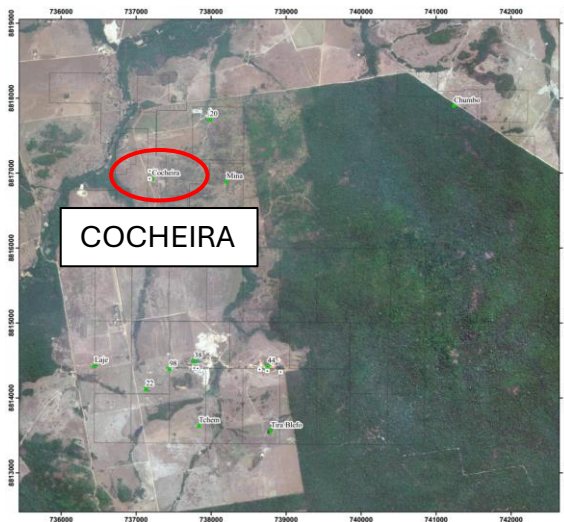
## ADVANCE – 20 TARGET

### Shaft Mapping and Sampling



# FIGUEIRA BRANCA PROJECT

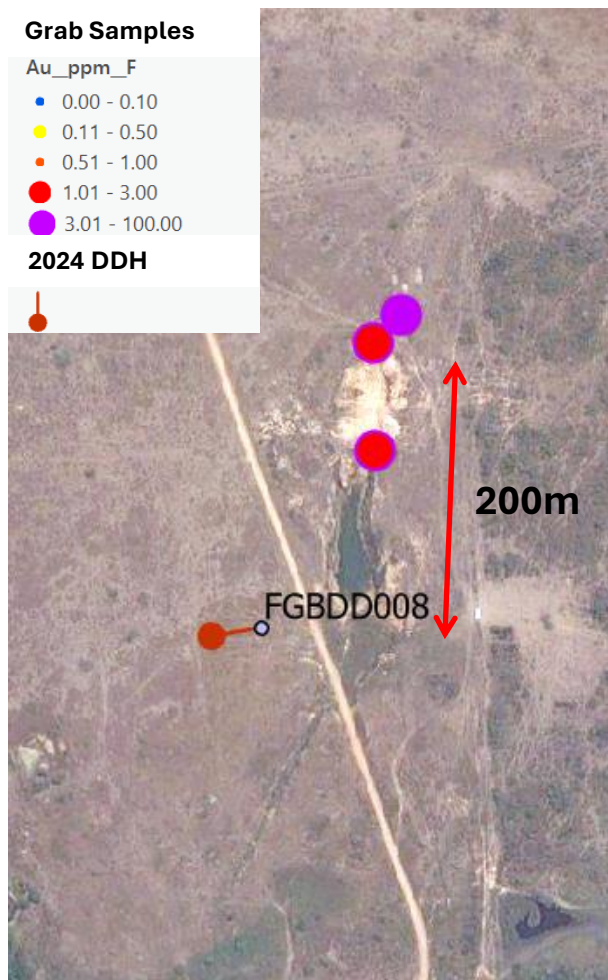
## ADVANCE – COCHEIRA TARGET



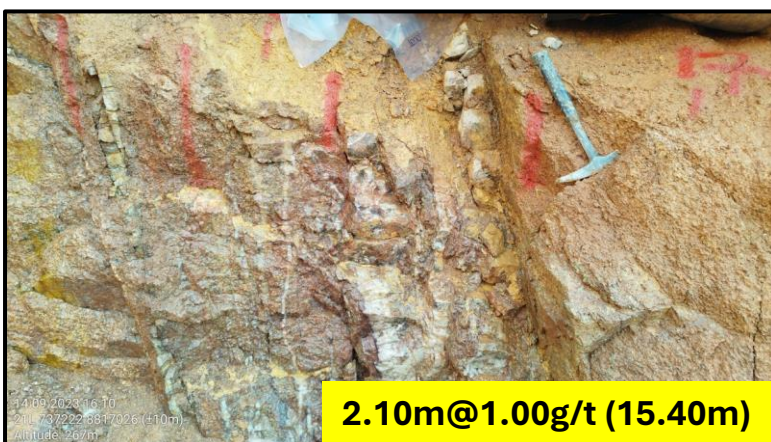
### Grab Samples

Au_ppm_F
0.00 - 0.10
0.11 - 0.50
0.51 - 1.00
1.01 - 3.00
3.01 - 100.00

### 2024 DDH

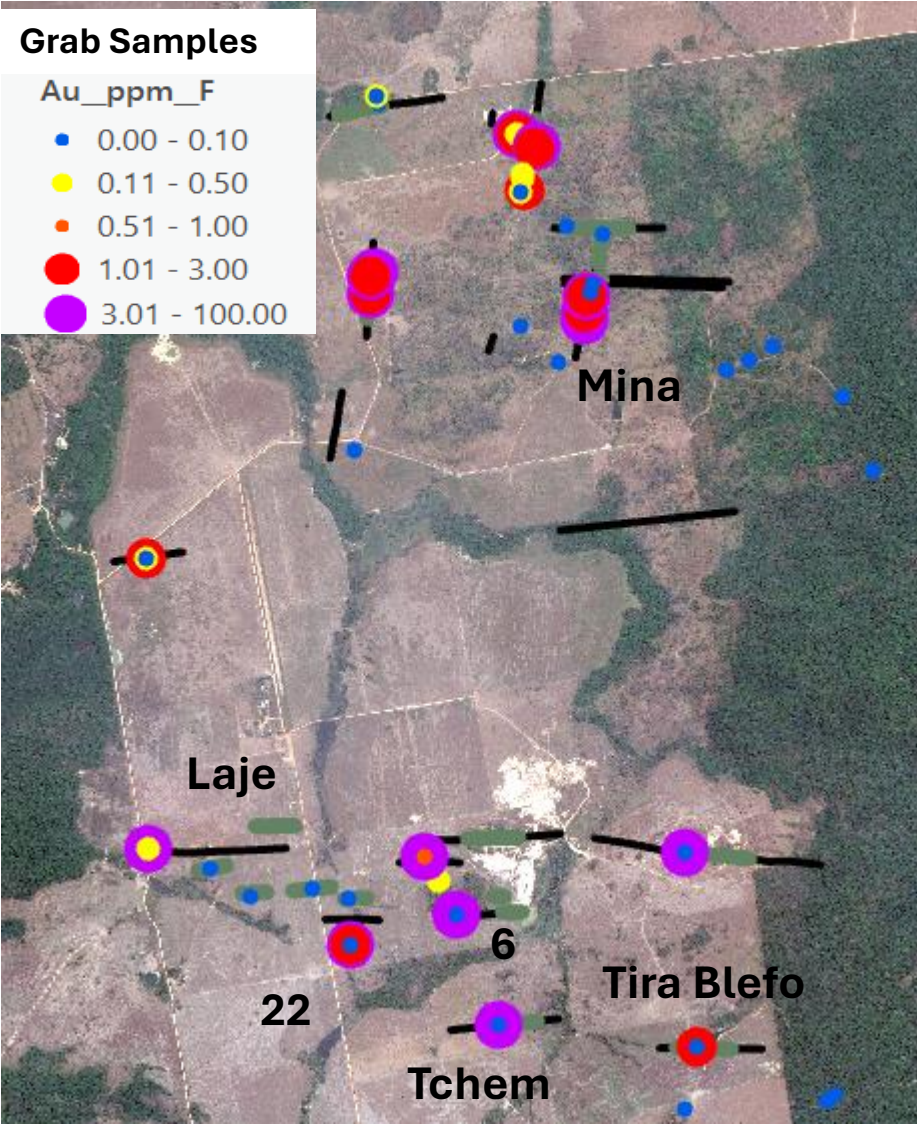


- Historical open pit with 200m along strike N005 with 5 to 10m of depth
- Mineralized zone is an sheet of quartz vein with boxwork hosted granite and/or mafic dike with N005 direction
- The quartz vein has comb textures (extensional and/or epizonal)
- Grab samples results returned up to **5.77 g/t Au**
- Best channel samples composite returned **2.1m@1.00 g/t Au (15.4m)**
- The potential is totally open

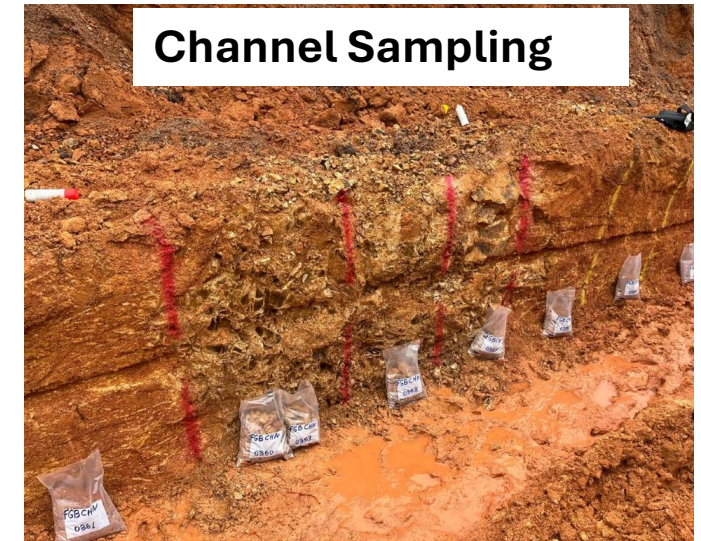


# FIGUEIRA BRANCA PROJECT

## PREPARING FOR DRILLING TARGETS

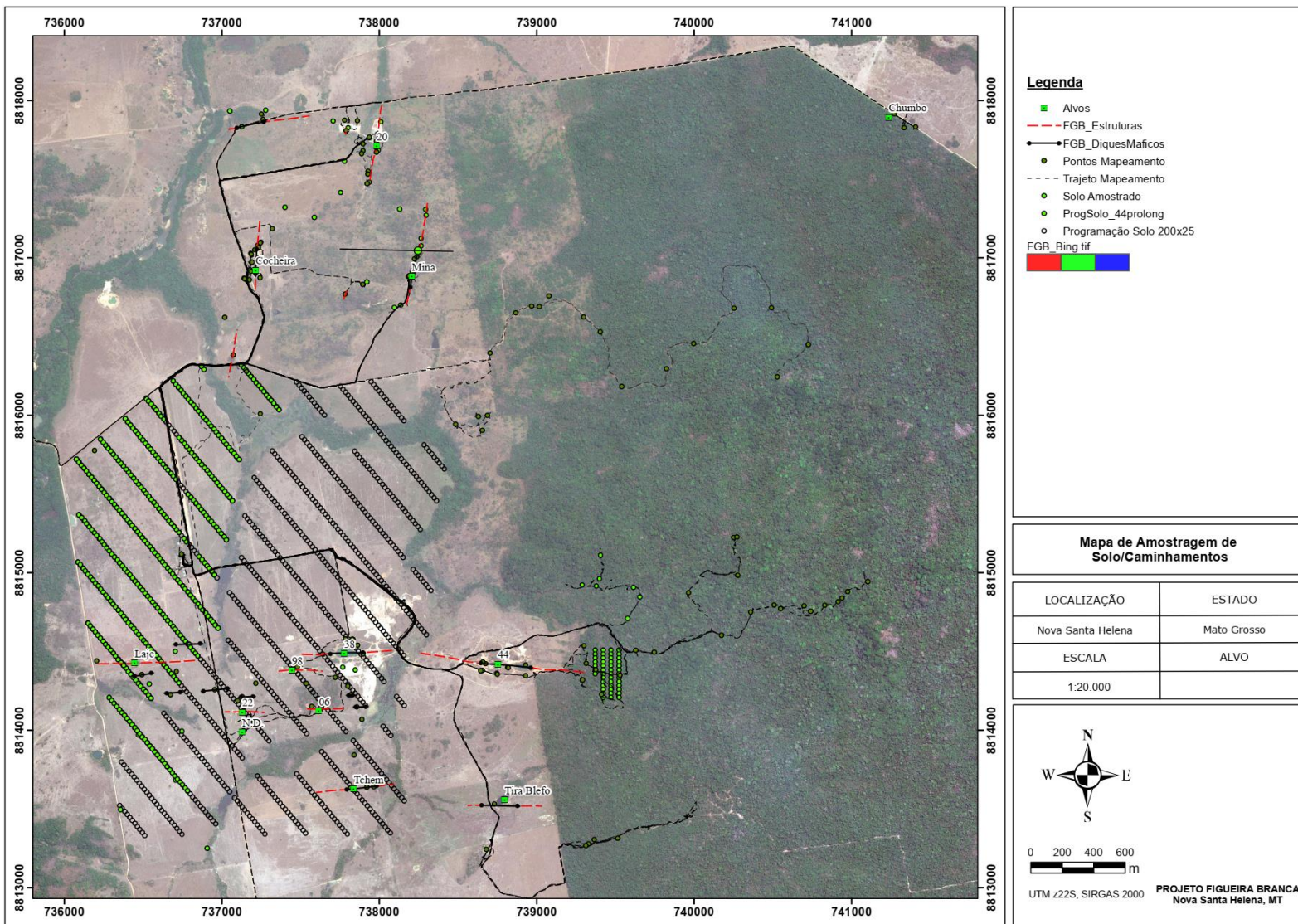


- 07 targets are being prepared for drilling - 06, Mina, Tira Blefo, 22, 98, Laje, Tchem
- Trenches and channel sampling are underway to confirm grade of historical garimpos and test extension along strike



# FIGUEIRA BRANCA PROJECT

## GENERATE 7 DEVELOPMENT TARGETS



- The objective is developing new targets across Figueira Branca district
- There are huge potential along 2.5km of EW trend, covering gaps between extension of 44, 38 until Laje
- Soil samples executed in 2024 was recently sent to Lab
- The results of soil samples may identify new gold anomalies
- In additional, the grab sampling is being conducted on outcrop with visible signs of mineralization.



# FIGUEIRA BRANCA PROJECT

## 2025 EXPLORATION PROGRAM

- The objective is to unlock the potential of the Figueira Branca Project and delineate the initial 100koz mineral resources to support the development of the asset
- A total of 10,000 meters of drilling and 4,50 meters of trenching are planned. To date, 1,800 meters of diamond drilling have been completed, including 1,300 meters from historical drill holes
- The primary focus is to expand upon the positive intersections at targets 44 and 38, including:
  - 2.41 meters at **6.19 g/t Au and 0.3% Cu** (FGBDD003)
  - 2.0 meters at **5.15 g/t Au** and 3.35 meters at **1.53 g/t Au**, including 1.0 meter at **3.49 g/t Au** (FGBDD004)
- The secondary focus is to test additional targets, such as 06, Mina, Tira Blefo, 22, 98, Laje, and Tchem, using trenching and channel sampling in preparation for drilling
- The third focus is to develop new targets within the Figueira Branca district through soil sampling, grab sampling, and trenching programs

# FIGUEIRA BRANCA PROJECT

## 2025 DRILLING PROGRAM

- **10,000m of drilling**

- ✓ **First Priority** - Drilling program has been focused along strike of target 44 and 38 with drilling spacing 25m to delineate shallow mineral resources to support start of mine operation
- ✓ **Second Priority** - Drilling program will test down dip and along strike extensions of target 44 and 38, confirming the potential to continue growing mineral resources
- ✓ **Third Priority** - Drilling program will test the other targets, opening new opportunities





# POCONE PROJECT

Shovel Ready Asset

Auriverde Mining:  
**Responsible growth,  
sustainable future**



# POCONE PROJECT

## INTRODUCTION

- Pocone is one of most important gold producer district in Brazil
- The discovery of gold occurred in the 18th century
- Several open-pit excavations, some over 100 meters deep, made possible by the presence of friable (easily excavated) rocks
- Bulk mining type, with average grades of up to 1 g/t Au
- Overall operational costs are low, enabling the viability of marginal grades
- Good infrastructure (paved roads, electricity, water), available mining labor, and good logistics (next to the city of Poconé and 100 km from Cuiabá)
- The project is inserted in mining trend, between Adao mining and MTSul mining
- There is a plant with a capacity of 1,500 tpd, power energy, offices, and other infrastructures



# POCONE PROJECT

## PLANT AND INFRASTRUCTURES

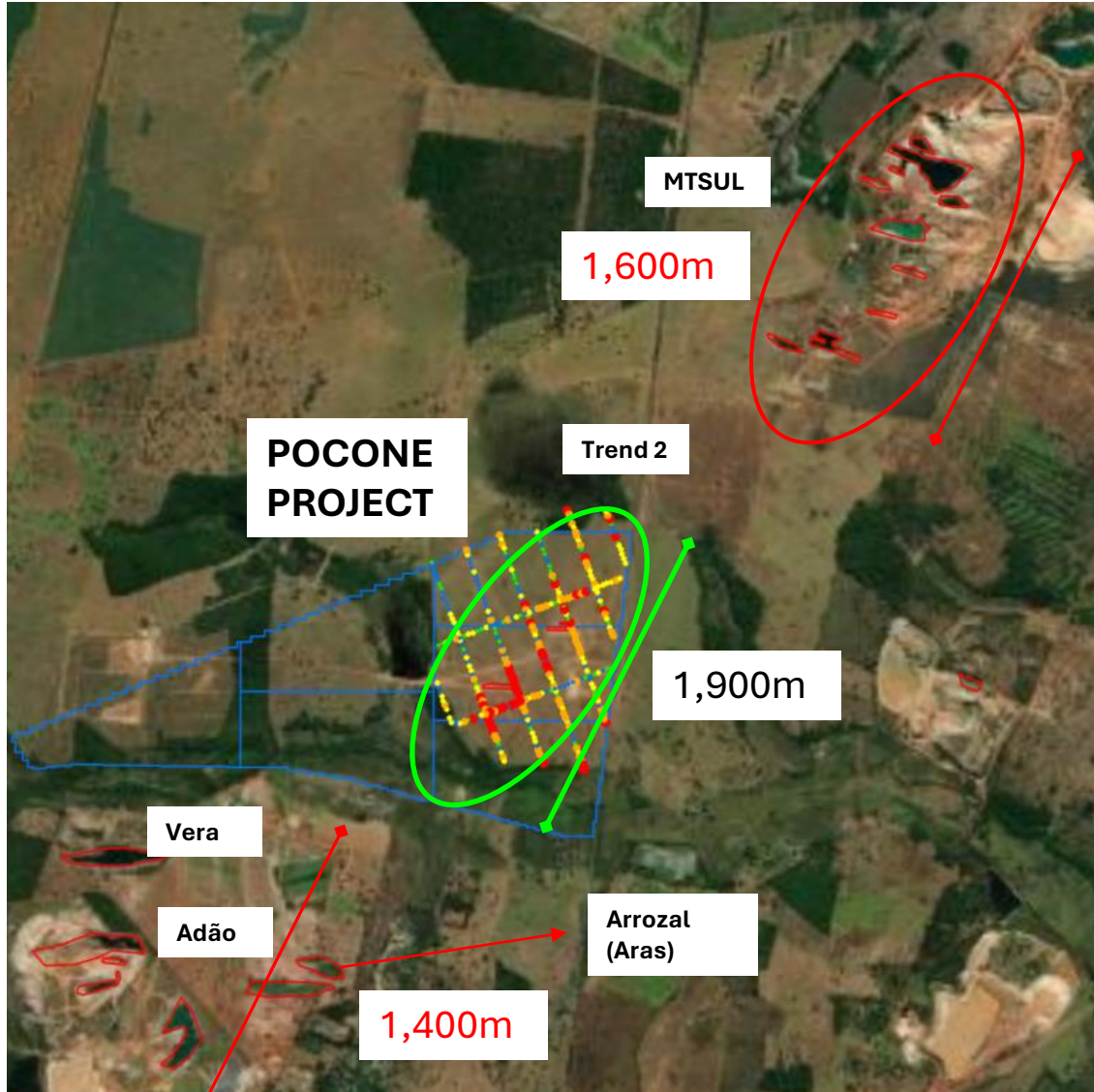
- Processing Plant with a 1,500 tpd of capacity, power energy, offices, and other infrastructures ready to start production with few adjustments



Auriverde Mining:  
**Responsible growth,  
sustainable future**

# POCONE PROJECT

LOCATED IN ADÃO-VERA-MTSUL TREND

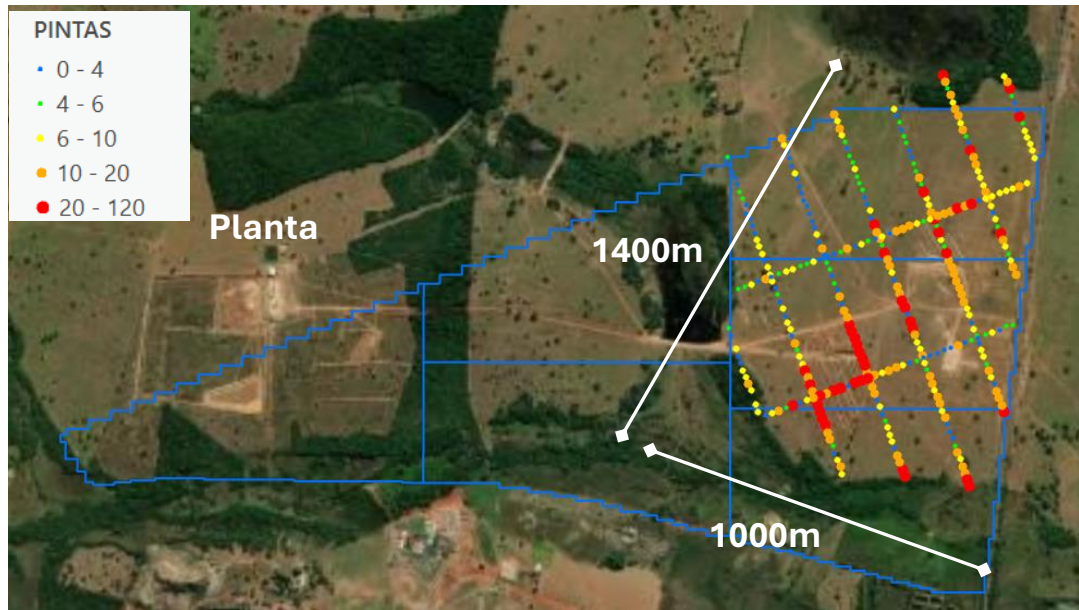


- 1,900m of strike, between Adão-Vera operation (1,400 m strike length) and MTSul operation (1,600 m strike length)
- Gold soil anomalies and channel samples in trenches confirmed mineralization
- 100 to 200 m are distance between the pits at MTSul, representing occurrences of veins trending N290 (Filao Veins)

# POCONE PROJECT

## SOIL SAMPLING RESULTS

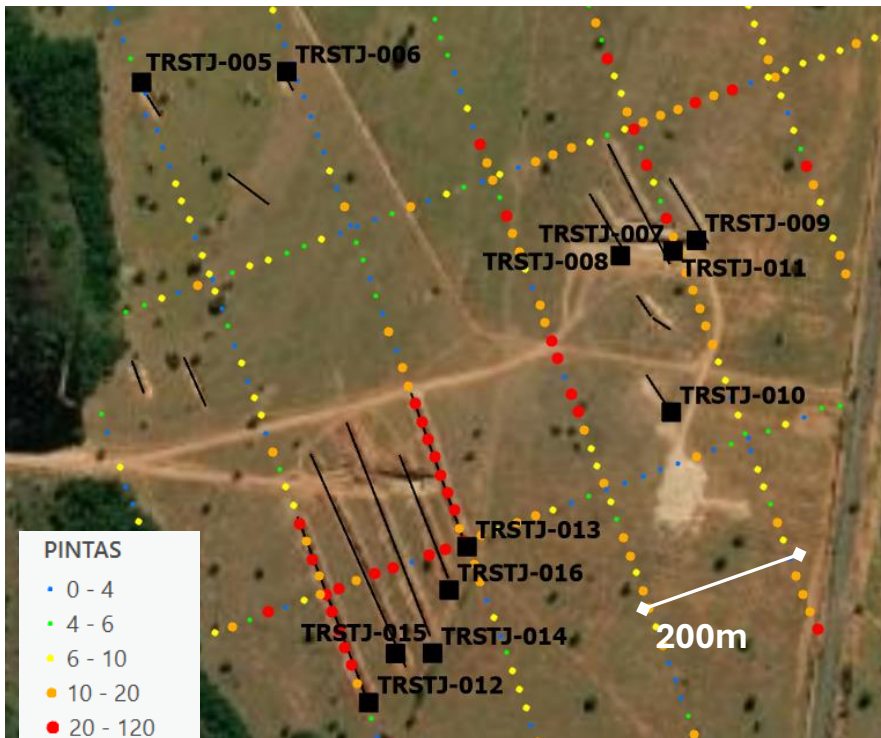
- 331 soil samples, 200x25m grid, covering an area of 1,400m by 1,000m
- 46 samples returned results greater than 20 gold specks, where the trenches were excavated



# POCONE PROJECT

## TRENCHES PROGRAM RESULTS

- 11 trenches (TR) were excavated with lengths of up to 300 meters
- 2 positive trenches: TRSTJ-007 and TRSTJ-008, with the best composites being: **5.5m @ 1.0 g/t Au** (TRSTJ-007), **2.0m @ 0.59 g/t Au** (TRSTJ-007), and **1.4m @ 0.69 g/t Au** (TRSTJ-008)

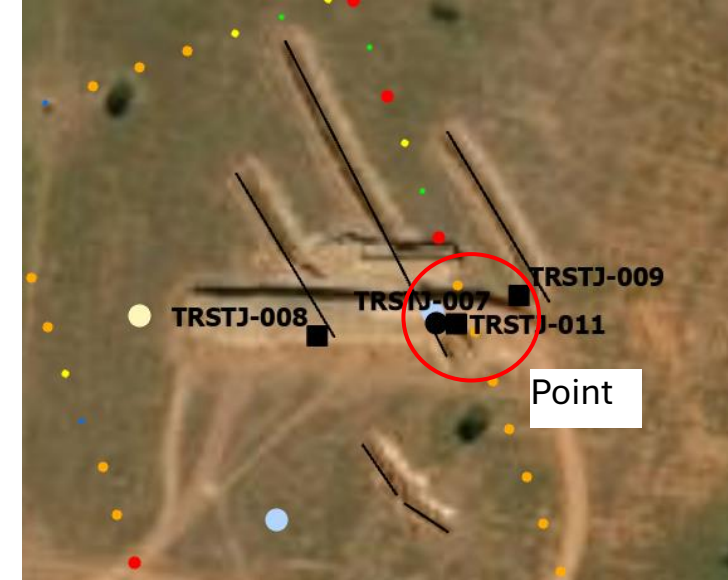
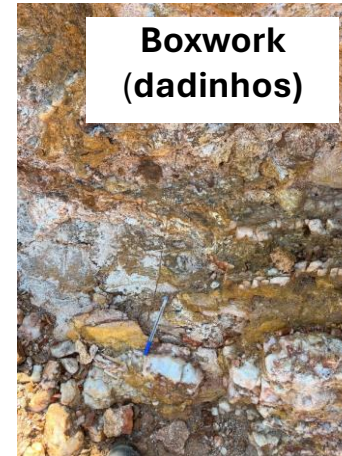
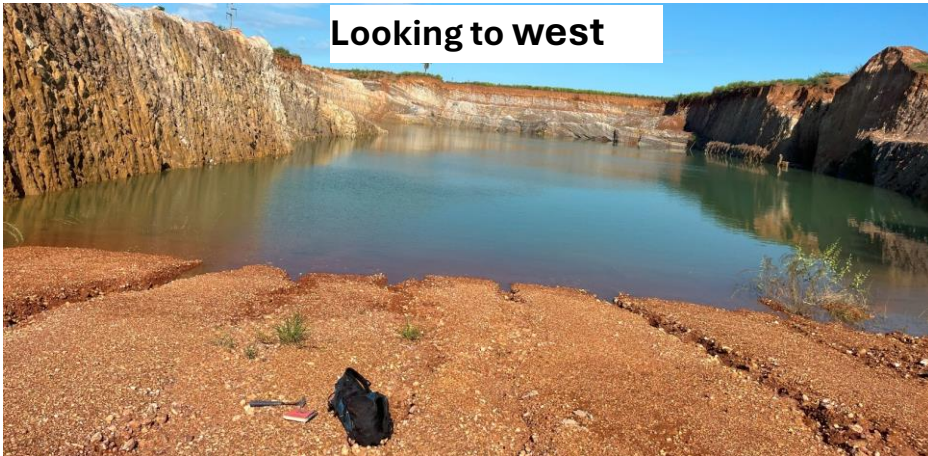


TR-ID	FROM (m)	TO (m)	INTERVAL (m)	GRADE (g/t Au)
TRSTJ-007	17.50	19.00	1.50	0.12
TRSTJ-007	36.00	38.00	2.00	0.18
TRSTJ-007	42.60	43.50	0.90	0.37
<b>TRSTJ-007</b>	<b>48.50</b>	<b>54.00</b>	<b>5.50</b>	<b>1.00</b>
<b>TRSTJ-007</b>	<b>72.00</b>	<b>74.00</b>	<b>2.00</b>	<b>0.34</b>
TRSTJ-007	86.00	87.50	1.50	0.19
TRSTJ-007	94.00	96.00	2.00	0.11
<b>TRSTJ-007</b>	<b>126.00</b>	<b>128.00</b>	<b>2.00</b>	<b>0.59</b>
<b>TRSTJ-008</b>	<b>52.00</b>	<b>53.40</b>	<b>1.40</b>	<b>0.69</b>

# POCONE PROJECT

## SHALLOW OPEN PIT

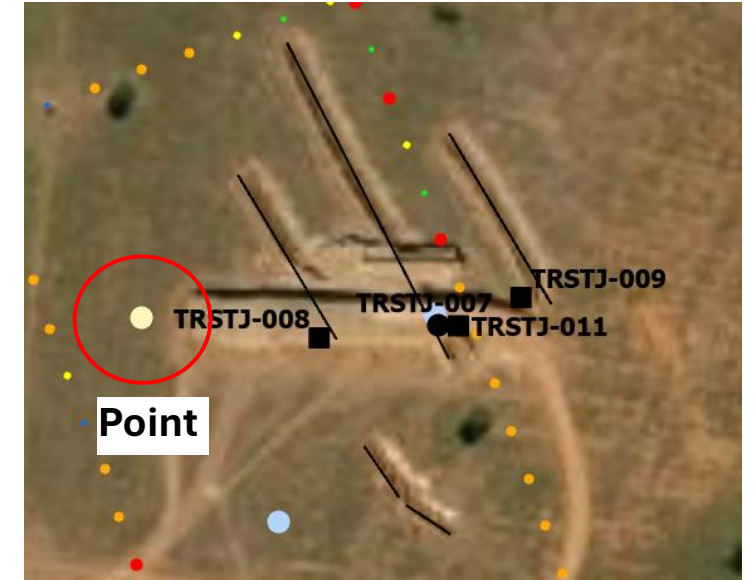
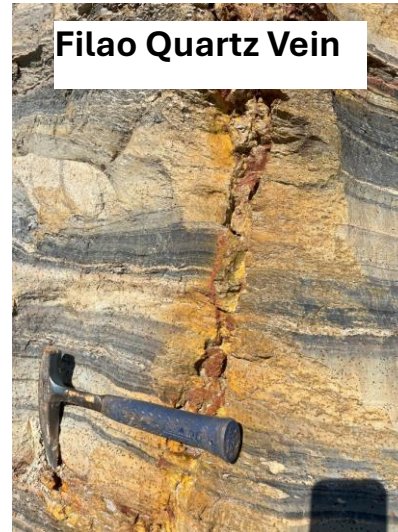
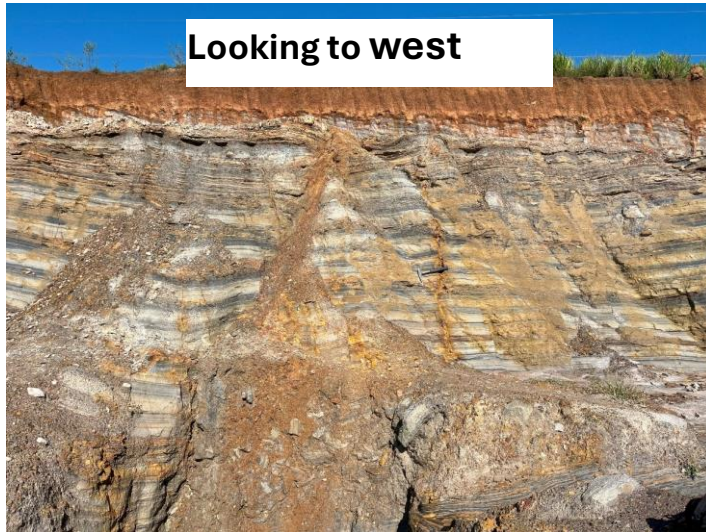
- Open pit located near trenches **TRTJ-007** and **TRSTJ-008**, measures 150 m by 25 m and approximately 8 m deep
- Cross-cut Travessao type vein observed on the floor of the access ramp
- Boxwork texture in metapelites, indicating hydrothermal alteration



# POCONE PROJECT

## SHALLOW OPEN PIT

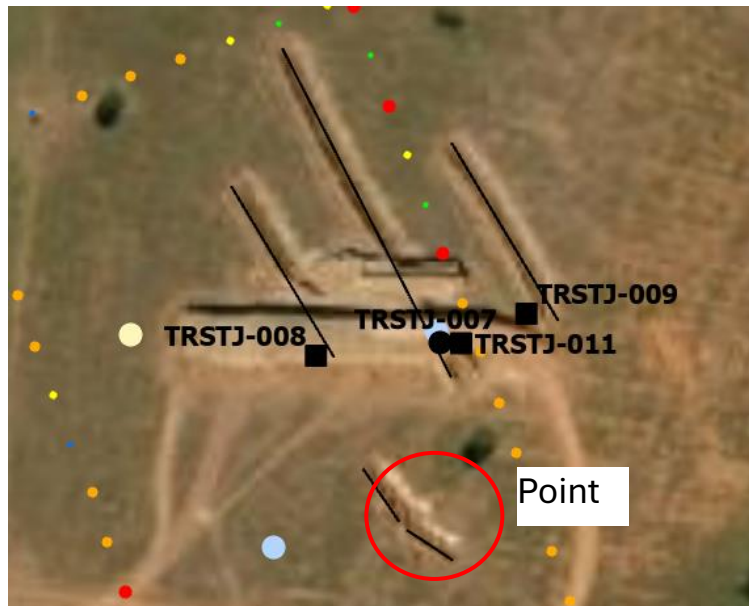
- Filao type veins (1 to 2 cm thick) with an alteration halo with oxidation exposed on the western wall of the pit
- Metarhytmite is host rock, with a few Costelao type vein
- 1 to 2 m of degraded laterite cover



# POCONE PROJECT

## SHALLOW OPEN PIT

- Smaller pit located 80 m south of the previous one
- Veinlets/veins (1 to 2 cm thick) with alteration halos and surface oxidation exposed on the floor of the access ramp
- Host rock is slightly more silicified than in the previous pit, suggesting stronger hydrothermal alteration





# POCONE PROJECT

## EXPLORATION PROGRAM

- The objective is UNLOCK the potential of Pocone and delineate the first mineral resources to support development of open-pit gold mine
- **5,000m** of drilling was planned
- **8,500m** of trenching was planned
- First focus is to test in down dip the mineralized zones intersected in open pit and trenches, that intersected **5.5m @ 1.0 g/t Au** (TRTJ-007), **2.0m @ 0.59 g/t Au** (TRTJ-007), and **1.4m @ 0.69 g/t Au** (TRTJ-008)
- Second focus is test with trenching and diamond drilling other anomalies generated by soil sampling
- Third focus is to generate new targets, using soil sampling, grab sampling, trenching-channel sampling for test to drill

# POCONE PROJECT

## SOIL SAMPLING AND TRENCHES PROGRAM

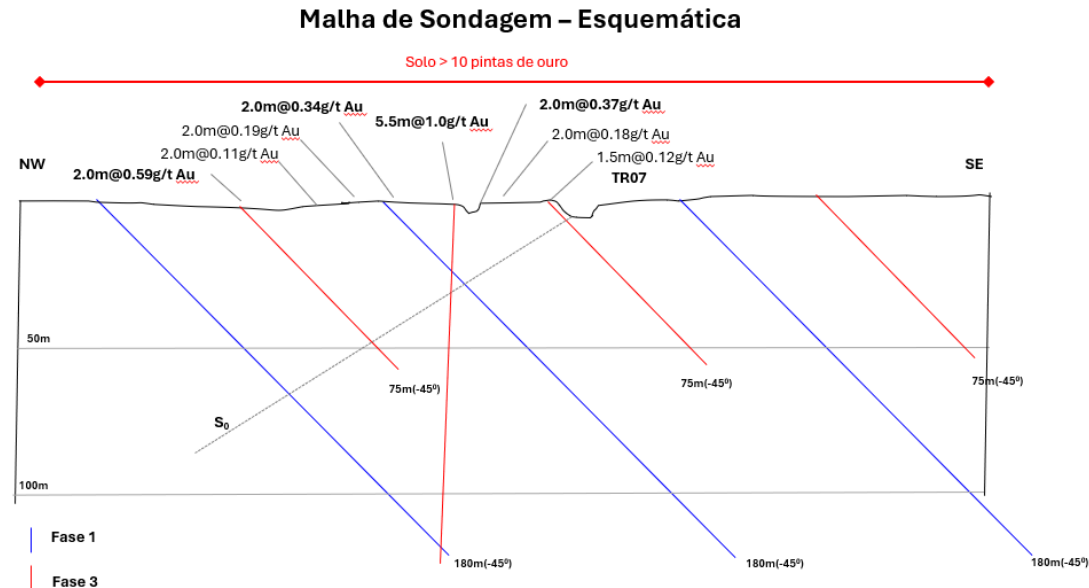
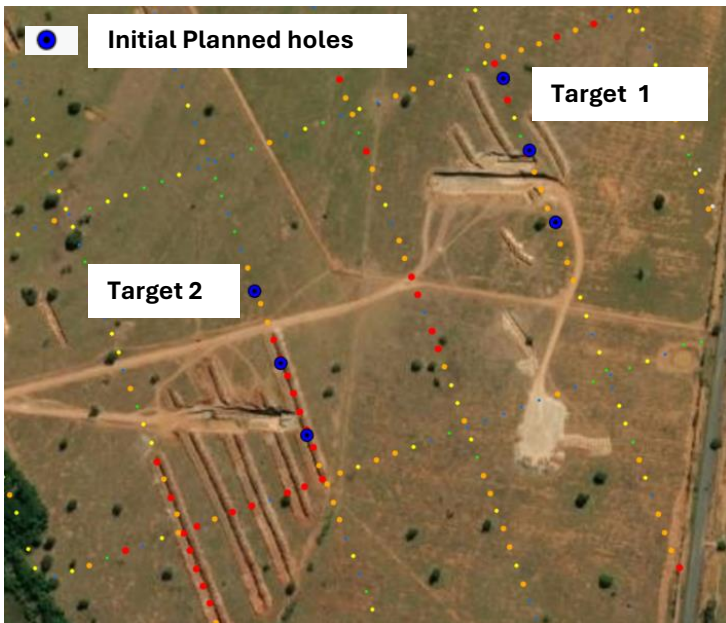
- The historical soil sampling returned positive results, that was confirmed by trenches
- Trenching will be an effective tool to expose the bedrock for mapping and channel sampling, given the presence of a lateritic cover



# POCONE PROJECT

## DRILLING PROGRAM

- **5000m** of drilling
- **First – Exploratory** – Drilling program will be test the two best anomalies in the eastern area, targeting 100 meters vertical depth with drill holes ranging from 180 to 200 meters deep
- **Second – Step-out** – Test the best results from Phase 1, between the two initial areas, expanding 200 meters along strike to the NE and SW
- **Third – Delineation** – Delineate the most prospective area using a 100 x 50 meter drill spacing, covering 50 meters vertical depth (drill holes approximately 80 meters deep)





# ALTA FLORESTA

Exciting Exploration Potential

Auriverde Mining:  
**Responsible growth,  
sustainable future**



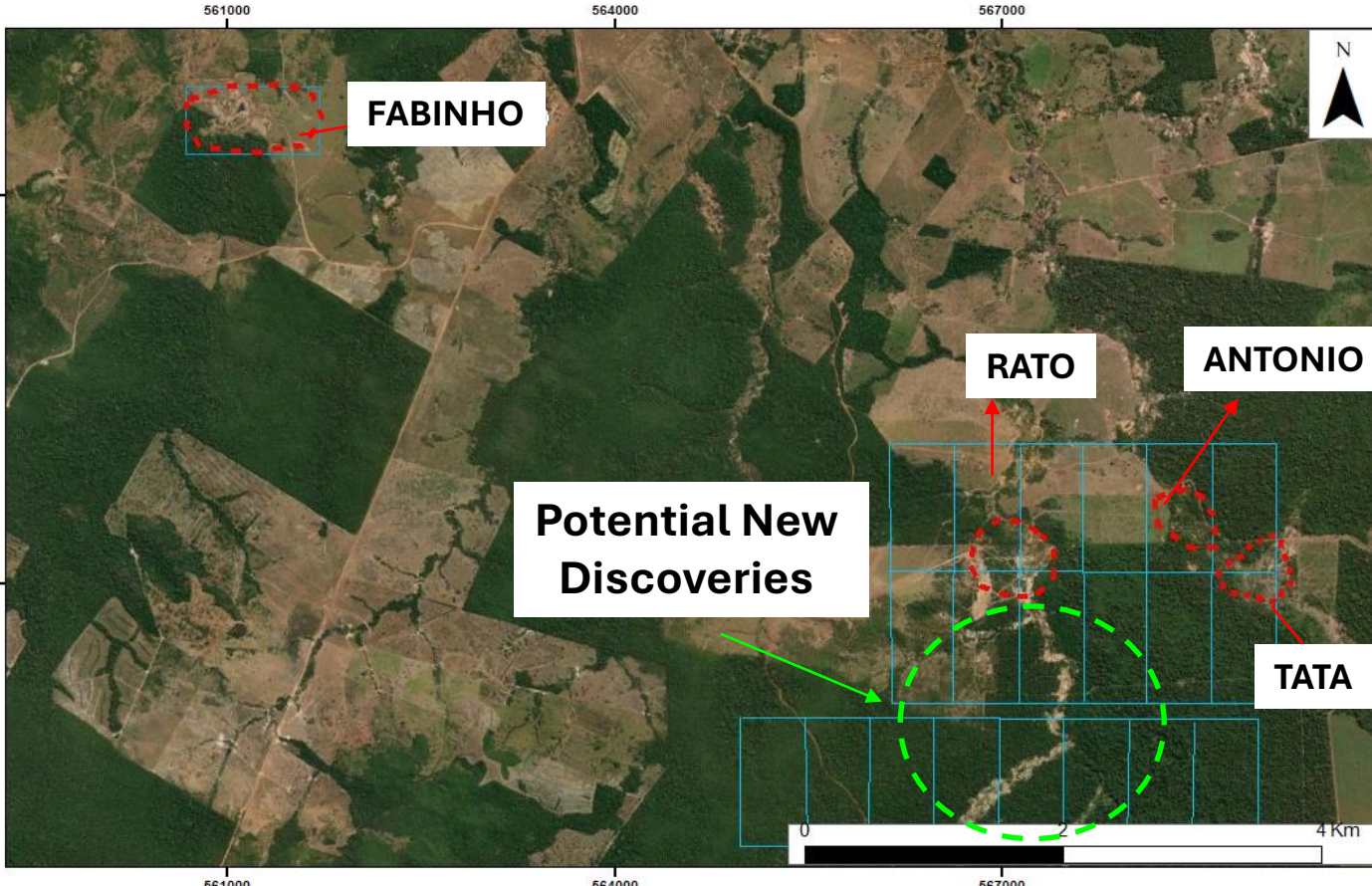
# ALTA FLORESTA PROJECT

## INTRODUCTION

- Located in a historically significant alluvial-colluvial gold-producing area, known as Pista do Cabeça
- 90km from Alta Floresta city and 395km from Sinop (Airport)
- 22 mining processes covering 1,184 hectares under Mining Permit (PLG)
- Majority mineral concession is located in the same landowner
- 4 current Exploration targets, plus a robust potential for new discoveries

# ALTA FLORESTA PROJECT

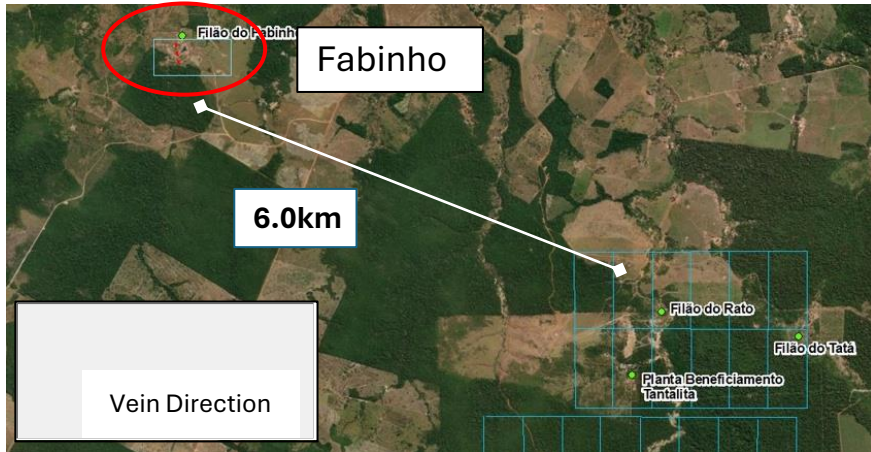
## TARGETS AND POTENTIAL FOR NEW DISCOVERIES



- **04 garimpos in primary source (Veins):**
  - Fabinho: Open Pit
  - Tatá: Underground (Shaft)
  - Antonio: Open Pit
  - Rato: Underground (Shaft)
- **Huge historical alluvial garimpos**
  - Across the area, there were alluvial garimpos located upstream of an area that was not explored yet
  - It suggests the presence of additional gold sources yet to be discovered in the southern part of the area

# ALTA FLORESTA PROJECT

## FABINHO TARGET

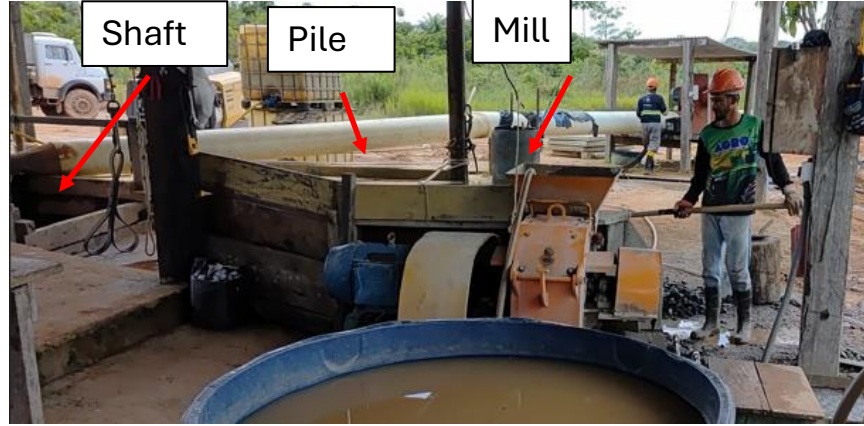
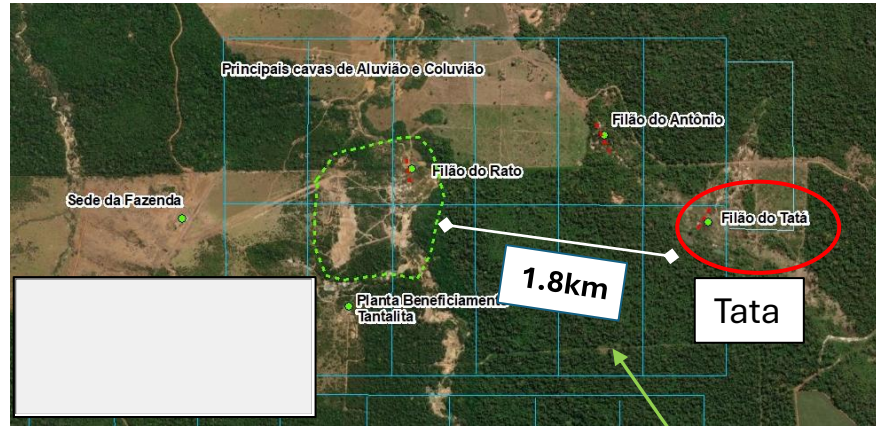


- 06 km from the main block of areas
- Open pit with 100m of strike, 50m width and approximately 30m of depth
- Quartz vein with 1 to 5 meters of thickness (verbal information) hosted in shist with North-South direction
- Historical chip samples results returned **6.8 g/t Au** and **5.5 g/t Au**



# ALTA FLORESTA PROJECT

## TATÁ TARGET

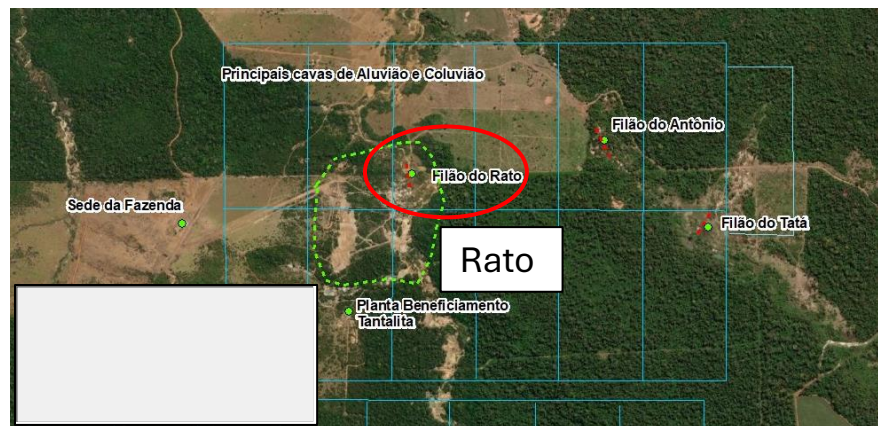


- Discovered underneath colluvium garimpo
- Before acquisition it had an active underground operation via artisanal mining shaft, reaching 70m in depth
- The mineralized zone has 0.5m to 2m, charactering by quartz vein with boxwork, hosted in mafic schist with Northeast-southwest direction
- Gold production during operation was approximately 1kg per week



# ALTA FLORESTA PROJECT

## RATO TARGET



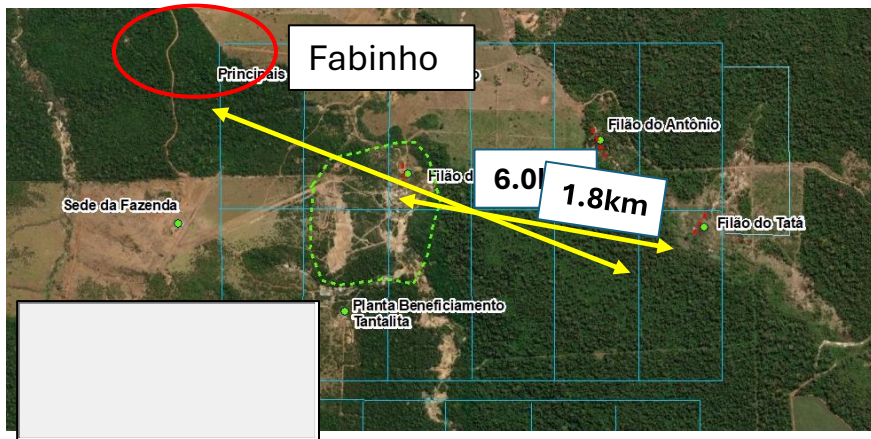
- Discovered underneath colluvium garimpo
- Primary garimpo was operated via shaft
- The mineralized zone is quartz vein with pyrite hosted in biotite schist with north-south direction
- Historical chip samples results returned **108.1 g/t Au** and **58.7 g/t Au** associated with quartz veins containing pyrite



# ALTA FLORESTA PROJECT

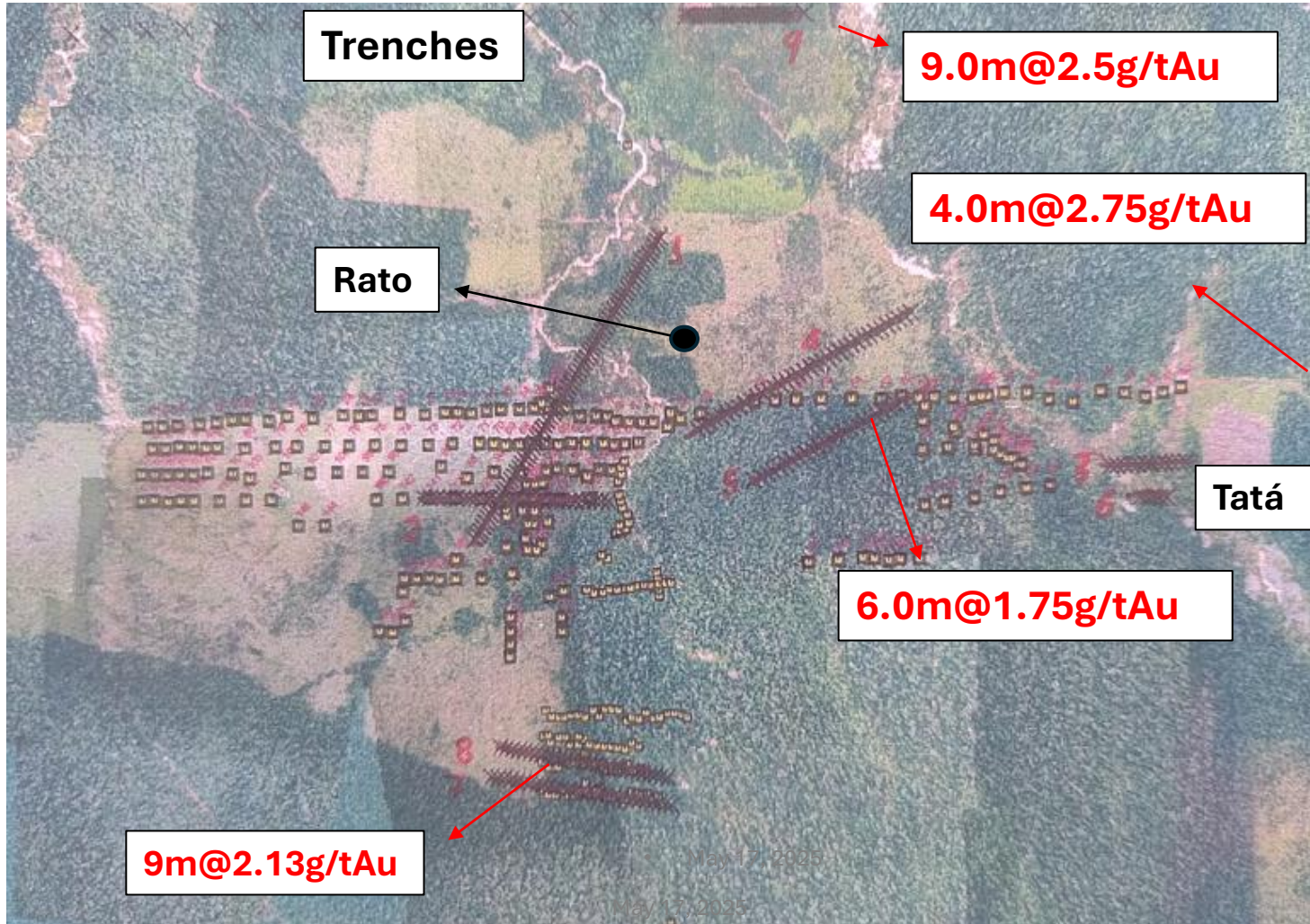
## ANTONIO TARGET

- Located in area known as Baixão Novo
- Discovered underneath alluvium garimpo
- Small open pit with 20m along strike and approximately 10m depth, orienting N005
- Historical chip samples results returned 5.35 g/t Au



# ALTA FLORESTA PROJECT

## HISTORICAL EXPLORATION – CHANNEL SAMPLING AND TRENCHING



- The Angus and Ross company did some Exploration works, including channel sampling in trenches and 08 diamond drill holes
- Some results from channel samples was recovered from graphics in paper records
- The values should be used only as a reference for anomaly identification



# ALTA FLORESTA PROJECT

## EXPLORATION PLAN

- The Exploration program was designed to unlock the potential of Alta Floresta Project, confirming mineralized zones along down dip and strike from current or historical garimpos, and discovery new mineralized zones across the remaining area
- Geological mapping in open pits, shafts and trenches will be conducted to support enhance drilling program
- Channel samples in open pits, shafts and trenches as well as diamond drill holes will be carried out to confirm, extend and delineate current targets – Fabinho, Tata, Antonio and Rato
- Simultaneously, a soil sampling program will be implemented to cover the entire area, aiming to discovery new mineralized zones
- The drilling program has been designed in three phases:
  - Step 1 – Exploratory Drilling – 02 to 03 initial holes to test the down dip extension of current or historical garimpos
  - Step 2 – Step Out Drilling – Extending positive intercepts along strike and down dip
  - Step 3 – Delineation Drilling – Delineation shallow mineralized zones with 25 per 25 meters drill spacing



# ALTA FLORESTA PROJECT

## EXPLORATION PLAN – DRILLING PROGRAM

### Step 1 – Exploratory holes

- The objective is confirm mineralized zones worked by garimpos, extending approximately 25 meters in down dip or along strike
- In this phase, all four targets will be tested with 02 to 03 drill holes each

### Step 2 – Step out holes

- The objective is focused at least two best results from first phase, extending mineralization along strike and/or down dip
- Drill hole spacing will be 50m or 25m, depending of geometry and grade variability of target, as indicated by geological mapping and channel sampling (from pits, shafts, and trenches)

### Step 3 – Delineation

- This phase the objective will be define on initial mineral resources to support decision to start operation in shallow zones
- The initial drilling program will follow a 25m by 25m spacing

